

Water Chiller

Air Dryer

Air Filter

Nitrogen Generator

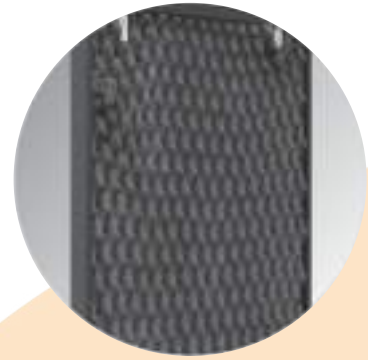


GM - TECH

Rotary Screw Air Compressor

GM10A - 300A / 7.5kW - 250kW

The unit adopt a fully closed mute design and uses excellent sound-absorbing material to minimize the noise from the machinery. Also, this part serves as a air cleaner which helps to protect other inner parts.



The oversized display is equipped with English display system to show the unit's full system performance status, maintenance instruction, fault alarms and safe downtime.



Permanent magnet frequency conversion intelligent start, infinitely adjust the speed of the motor, intelligent gas production, to eliminate the fixed speed air compressor loading control of the waste phenomenon, energy saving and consumption reduction.



Standardized designed wire connectors, stable micro-computer control, Schneider electric components, fault self-diagnosis and protection function. Those factors make the compressor energy saving and runs more stably.



An effective single pass cooling system is vitally important to ensure reliability and efficiency in high ambient conditions. Axial cooling fan incorporating a high efficiency motor. Low noise level.





The large volume of oil and gas barrels optimize the internal pressure ratio of the whole system. The oil and gas separation effect is excellent, the oil content of the finished compressed air is controlled in an ideal range.



Ultra-efficient filtration accuracy, keep the oil system clean for a long time, greatly extend the service life of the compressor, while reducing the cost of use and maintenance.



High performance fully enclosed air cooling motor, extremely strong power. IP54 protection class motor, protect the internal dust, insulation class F grade. Achieve long-term continuous without failure under high temperature condition.



This is the world's top screw compressor with high efficiency, low speed, low energy consumption, long service life and high reliability.



Centrifugal fan with aluminum fan blades increase 30% air volume and dissipate heat faster. It is able to adapt to high temperature, high humidity and other poor operating condition.



GM - TECH HIGH EFFICIENCY SCREW AIR COMPRESSOR

Straight league transmission

High precision screw head

Efficient asynchronous motor

High quality oil filter



SCREW AIR COMPRESSOR SERIES

Technical Specifications of Screw Air Compressor Series

Model			GM - 7.5A	GM - 10A	GM - 15A	GM - 20A	GM - 30A	GM - 40A	GM - 50A	GM - 60A	GM - 75A	GM - 100A	GM - 150A	GM - 200A
isplacement /Exhaust pressure	7 bar	(M ³ /min) Mpa	0.84/0.7	1.12/0.7	1.72/0.7	2.28/0.7	3.60/0.7	5.17/0.7	6.85/0.7	8.20/0.7	10.67/0.7	13.71/0.7	22.22/0.7	24.71/0.7
	8 bar		0.79/0.8	1.05/0.8	1.61/0.7	2.13/0.8	3.36/0.8	4.83/0.8	6.41/0.8	7.67/0.8	9.98/0.8	12.81/0.8	18.90/0.8	23.10/0.8
	10 bar		0.69/1.0	0.92/1.0	1.41/1.0	1.87/1.0	2.95/1.0	4.24/1.0	5.62/1.0	6.71/1.0	8.75/1.0	11.24/1.0	16.58/1.0	20.26/1.0
	12.5 bar		0.63/1.25	0.84/1.25	1.29/1.25	1.29/1.25	1.71/1.25	2.69/1.25	5.12/1.25	6.13/1.25	7.98/1.25	10.25/1.25	15.12/1.25	18.48/1.25
Motor power	Rated power	kW	5.5	7.5	11	15	22	30	37	45	55	75	110	150
	Input voltage	v	AC220/380/440, 3 - phase											
	Frequency	Hz	50/60											
	Starting method		Y-Δ											
ompression unit	Driven method		Direct driven type											
	Suction temperature	°C	MAX.40											
	Outlet temperature		MAX. Suction temperature +15											
	Cooling method		Air cooled										Air/Water cooled	
Outlet pipe diameter	G	3/4"	3/4"	1"	1"	1"	1 1/2"	1 1/2"	1 1/2"	2"	2"	2 1/2"	2 1/2"	
Control method		GM - Tech controller (ZL - 150)												
Noise level	dB(A)	62±2	62±2	63±2	63±2	65±2	65±2	65±2	68±2	72±2	72±2	75±2	75±2	
Overall dimension	Length x width x height (mm)	L	1000	1000	1200	1200	1255	1300	1390	1150	1570	1570	2200	2200
		W	655	655	735	735	850	860	980	950	1200	1200	1550	1550
		H	735	735	1070	1070	1240	1240	1295	1360	1500	1500	2000	2000
Weight	Kg	185	205	245	255	290	580	630	660	1350	1450	2200	2250	

GM - TECH

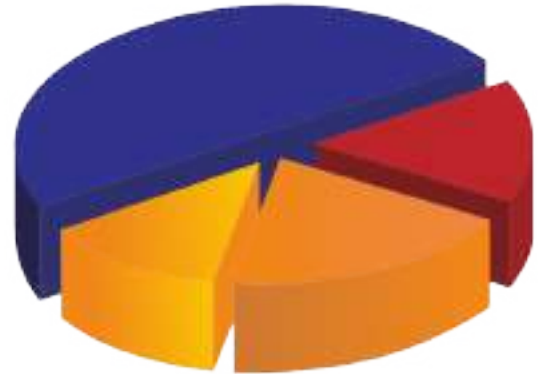
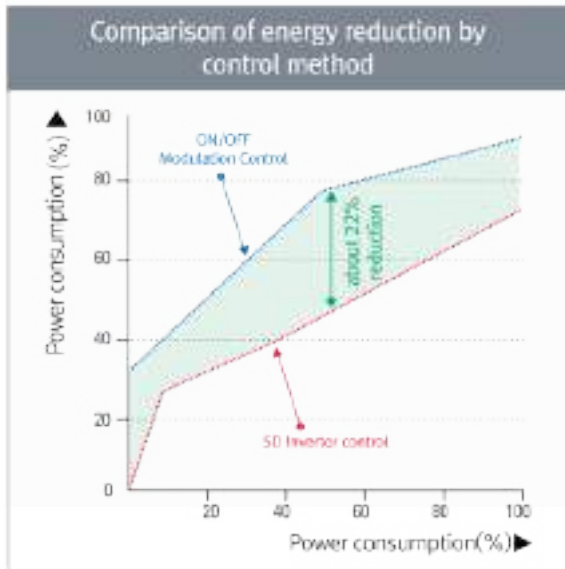
PERMANENT MAGNET INVERTER SCREW AIR COMPRESSOR

ENERGY CONSERVATION PREDICTION ASSESSMENT

In the entire service life of air compressor, energy consumption really takes up all the costs of it. Therefore, carefully assess your actual gas changes before selection, then decide on investment options to get a reasonable return on a reasonable investment.

PID (proportional gain, differential gain, integral gain) mode is adopted for precisely adjusting air compressor speed, automatic tracking system air flow change, stable system pressure force, reduce the consumption of electricity.

Discharge pressure at 0.69MPa



- Investment
- Energy saved by VSD
- Energy consumption
- Maintenance

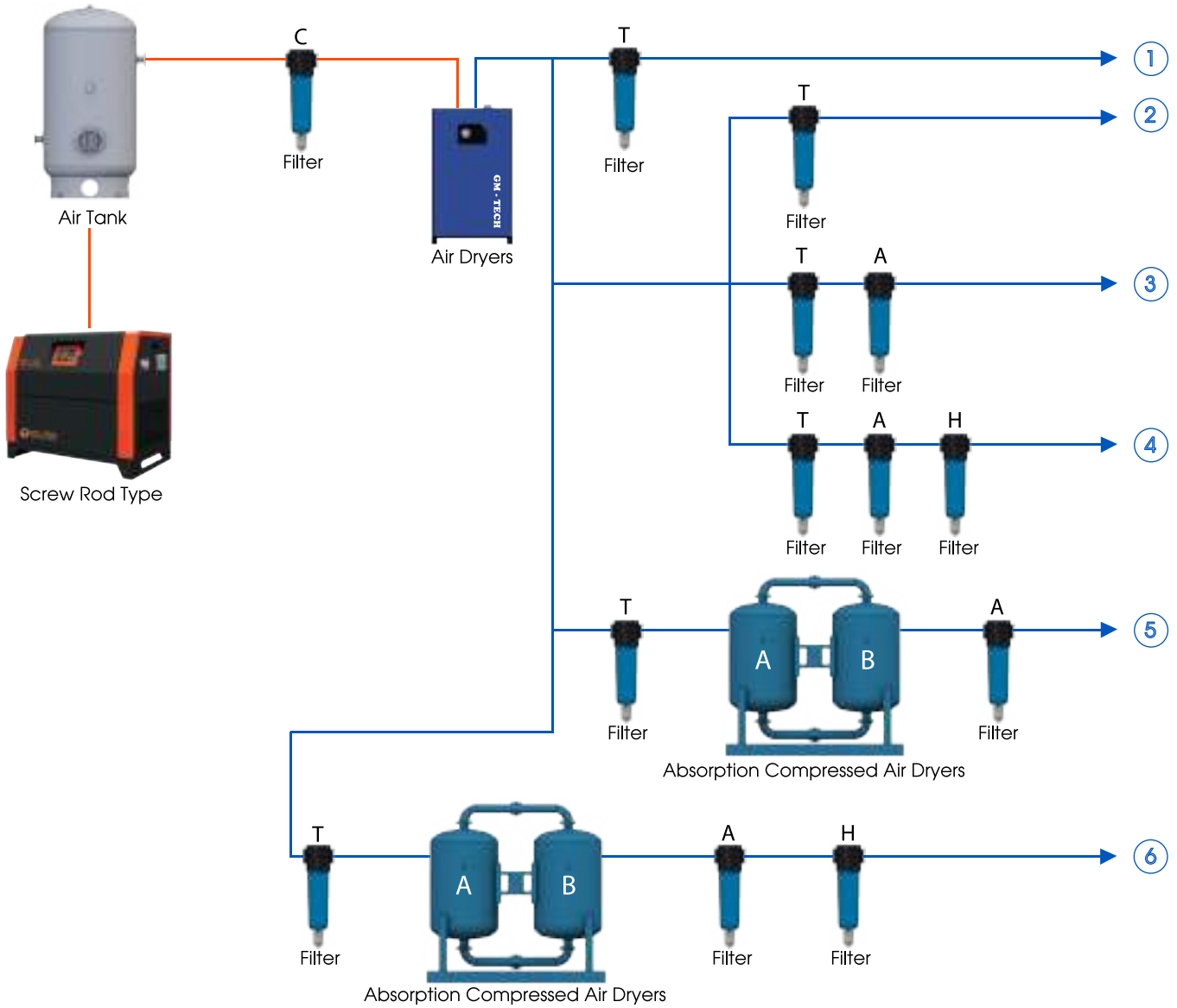
STABLE PRESSURE

PID (proportional gain, differential gain, integral gain) mode is adopted for precise adjustment Air compressor speed, automatic tracking system air flow change, stable system pressure Force, reduce the consumption of electricity.

INTELLIGENT PM VSD SCREW AIR COMPRESSOR

Technical Specifications of PM VSD Screw Air Compressors

Model			GM - 7.5A	GM - 10A	GM - 15A	GM - 20A	GM - 30A	GM - 40A	GM - 50A	GM - 60A	GM - 75A	GM - 100A	GM - 150A	GM - 200A
Displacement /Exhaust pressure	7 bar	(M ³ /min) Mpa	0.84/0.7	1.12/0.7	1.72/0.7	2.28/0.7	3.60/0.7	5.17/0.7	6.85/0.7	8.20/0.7	10.67/0.7	13.71/0.7	22.22/0.7	24.71/0.7
	8 bar		0.79/0.8	1.05/0.8	1.61/0.7	2.13/0.8	3.36/0.8	4.83/0.8	6.41/0.8	7.67/0.8	9.98/0.8	12.81/0.8	18.90/0.8	23.10/0.8
	10 bar		0.69/1.0	0.92/1.0	1.41/1.0	1.87/1.0	2.95/1.0	4.24/1.0	5.62/1.0	6.71/1.0	8.75/1.0	11.24/1.0	16.58/1.0	20.26/1.0
	12.5 bar		0.63/1.25	0.84/1.25	1.29/1.25	1.29/1.25	1.71/1.25	2.69/1.25	5.12/1.25	6.13/1.25	7.98/1.25	10.25/1.25	15.12/1.25	18.48/1.25
Motor power	Rated power	kW	5.5	7.5	11	15	22	30	37	45	55	75	110	150
	Input voltage	v	AC220/380/440, 3 - phase											
	Frequency	Hz	50/60											
	StarΔing method		Y-Δ											
Compression unit	Driven method	°C	Direct driven type											
	Suction		MAX.40											
	Outlet temperature		MAX. Suction temperature +15											
	Cooling method		Air cooled											Air/Water cooled
Outlet pipe diameter	G	3/4"	3/4"	1"	1"	1"	1½"	1½"	1½"	1½"	2"	2"	2½"	2½"
Control method		GM - Tech controller (ZL - 150)												
Overall dimension	Noise level	dB(A)	62±2	62±2	63±2	63±2	65±2	65±2	65±2	68±2	72±2	72±2	75±2	75±2
		L	1000	1000	1200	1200	1255	1300	1390	1150	1570	1570	2200	2200
		W	655	655	735	735	850	860	980	950	1200	1200	1550	1550
Weight	H	Kg	735	735	1070	1070	1240	1240	1295	1360	1500	1500	2000	2000
		Kg	185	205	245	255	290	580	630	660	1350	1450	2200	2250



1. General power gas
2. Pneumatic tools, general instrumentation, precision sand blasting
3. Precision industry, precision instrumentation, textile, chemical electronics, general coating
4. Hospital, respiratory, pharmaceutical, aseptic packaging, food industry
5. Electronics industry, chip manufacturing, advanced spraying, film industry, precision instrumentation instruments, nuclear industry, aerospace industry
6. Food industry, pharmaceutical industry, clean room test equipment

GENUINE ACCESSORIES

Only the use of the original parts and service can it maximum guarantee the normal operation and normal life of the air compressor.



GM-TECH AIR COMPRESSOR

- Tel: (+84) 909 514 123
- Phone: (+84) 246 6868 111
- Email: gmtechaircomp@gmail.com
- Website: chvietnam.vn
- Address: No 53 Duc Giang Industrial Area, Long Bien District, Ha Noi City, Viet Nam



Please scan the QR code